

SOUTH SIXTH STREET – EXISTING ROADWAY SECTION

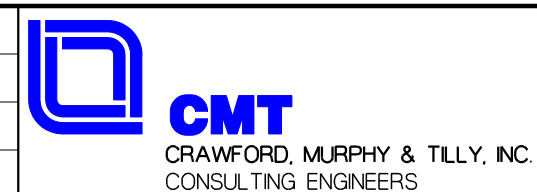
NORTH OF STEVENSON DRIVE INTERSECTION
(LOOKING NORTH)

3

FILE NAME =
...NPM_TypicalSection_001.dgn

USER NAME = Rob Heady

DESIGNED - CMT
DRAWN - CMT
CHECKED - IDOT
DATE - 11/9/2011



**STATE OF ILLINOIS
DEPARTMENT OF TRANSPORTATION**

**SOUTH SIXTH STREET EXPANSION STUDY
EXISTING ROADWAY SECTION**

SCALE: SHEET NO. OF SHEETS STA. TO STA.

F.A. RTE.	SECTION	COUNTY	TOTAL SHEETS	SHEET NO.
BL55		SANGAMON	1	1
CONTRACT NO.				
ILLINOIS FED. AID PROJECT				